
Government-Furnished Capabilities for IARPA SMART ePANTS



Delivered to the U.S. Government with Unlimited Rights, as defined in DFARS Part 252.227-7013 or 7014 (Feb 2014). Notwithstanding any copyright notice, U.S. Government rights in this work are defined by DFARS 252.227-7013 or DFARS 252.227-7014 as detailed above. Use of this work other than as specifically authorized by the U.S. Government may violate any copyrights that exist in this work.

Approved for public release. Distribution is unlimited.

© 2022 Massachusetts Institute of Technology.

This material is based upon work supported by the Department of the Air Force under Air Force Contract No. FA8702-15-D-0001. Any opinions, findings, conclusions or recommendations expressed in this material are those of the author(s) and do not necessarily reflect the views of the Department of the Air Force.



Outline



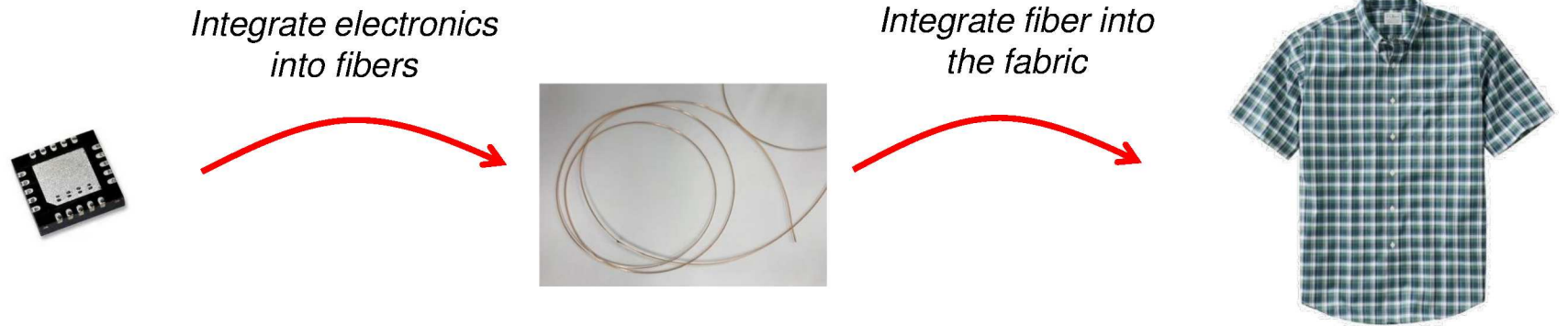
- **Overview of textile integration techniques**
- **Integration of electronics into fibers**
- **Fiber encapsulation**
- **Integration of fiber into the fabric**
- **Direct attachment of electronics to the fabric**
- **Electrical connection to electronics outside the garment**
- **Full garment construction**
- **Custom integrated circuit**
- **Custom optics**



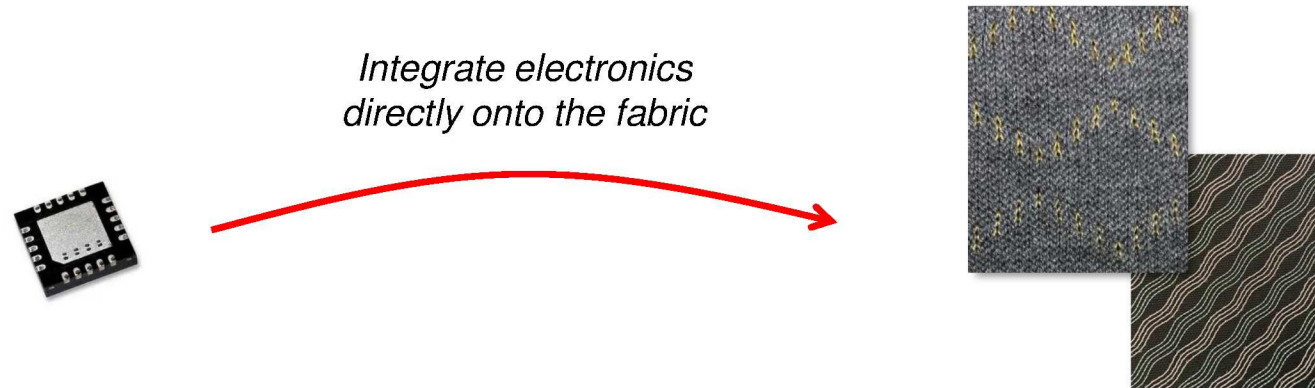
Overview



Approach #1



Approach #2



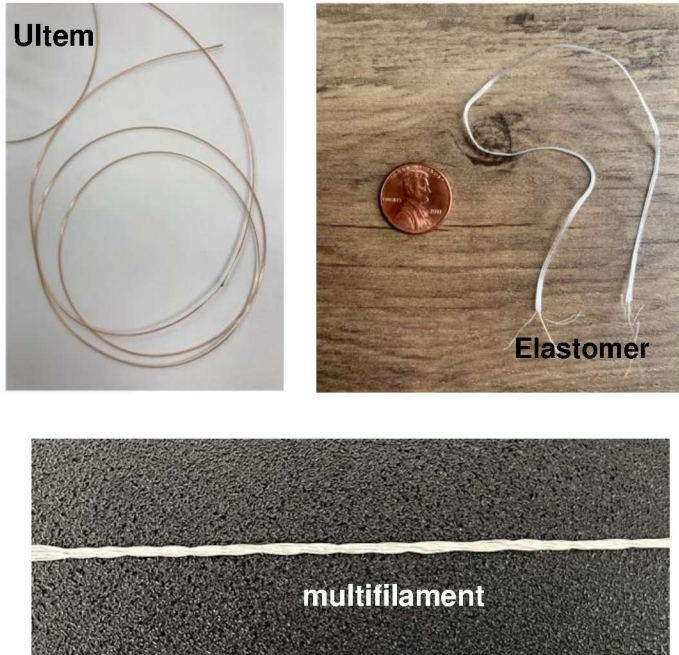


Fiber Design Space

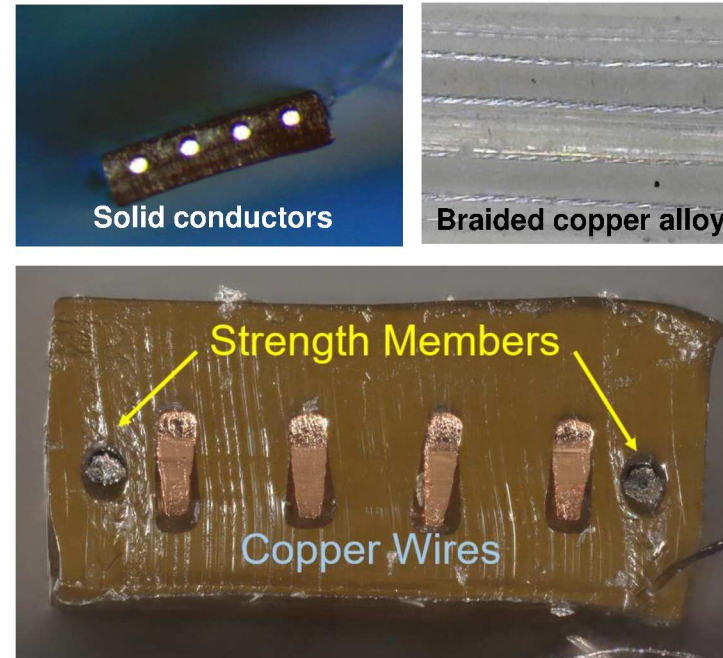


- Fibers can be made up of various cladding and component materials
- Connectorization to a fiber can be done in a variety of ways

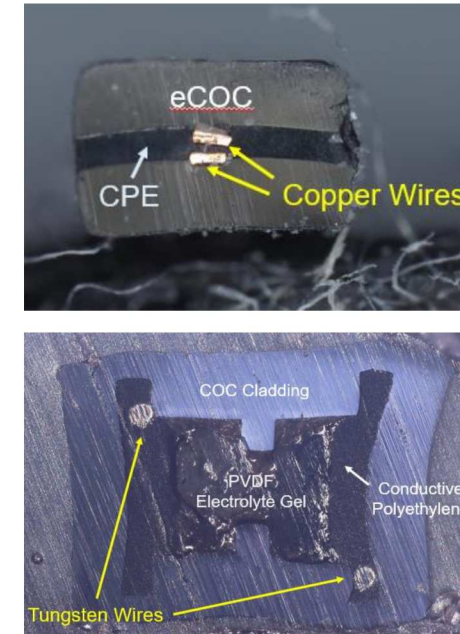
Cladding materials



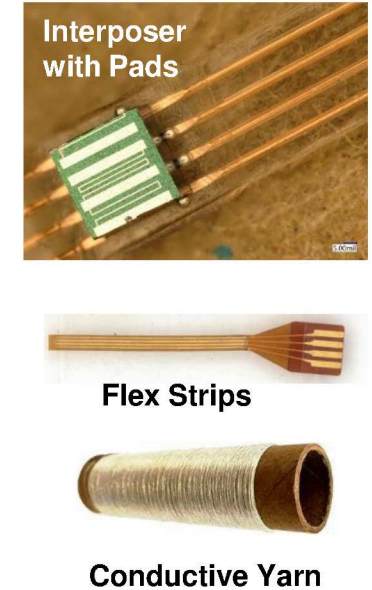
Component materials



Multi-Material Fibers



Connectorization

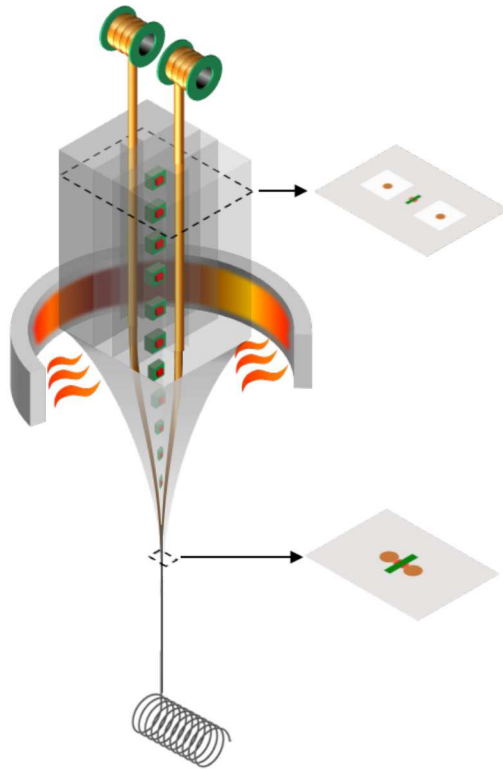




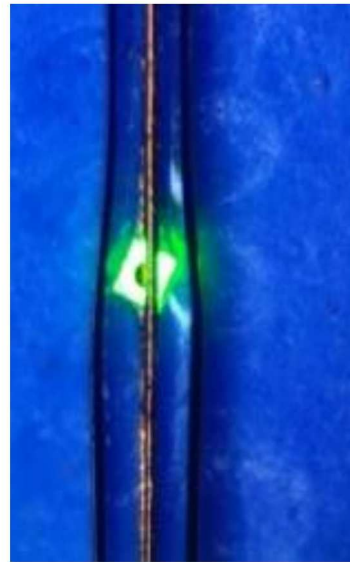
Embedded Draw



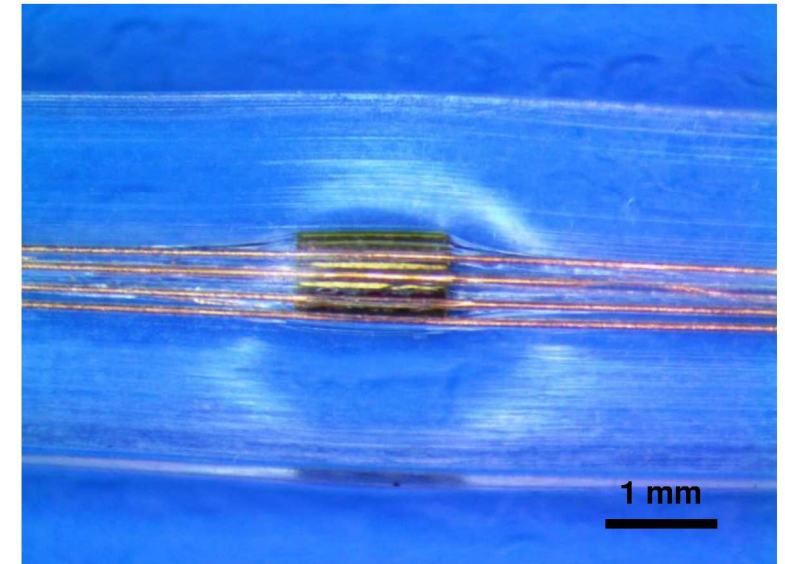
Integration of electrical components can be done during the draw process



Two-Wire Fiber with LED



Four-Wire Fiber with PCB



Rein et al, 2018, *Nature*, Vol 560

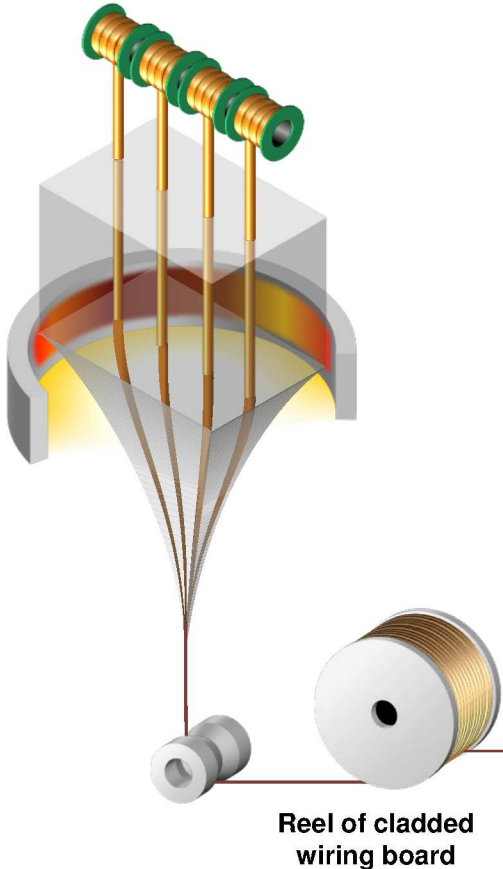


Post-Draw Integration of Electronics



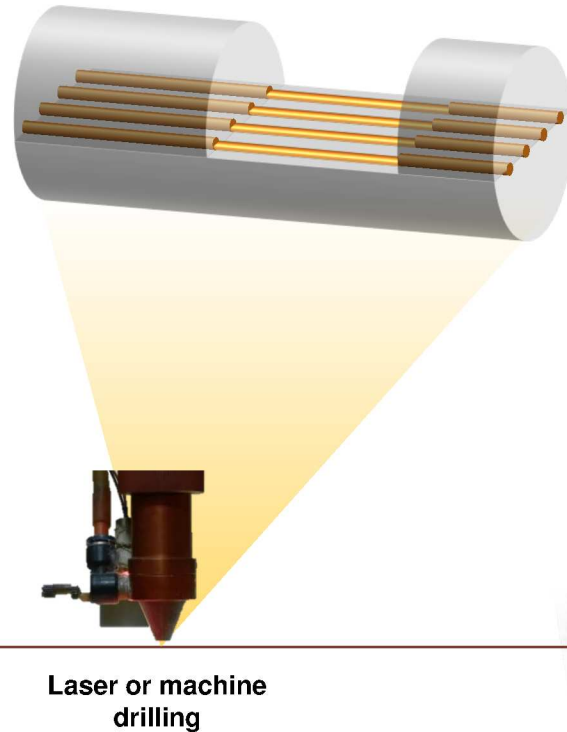
STEP 1

Thermal draw of wiring board + cladding



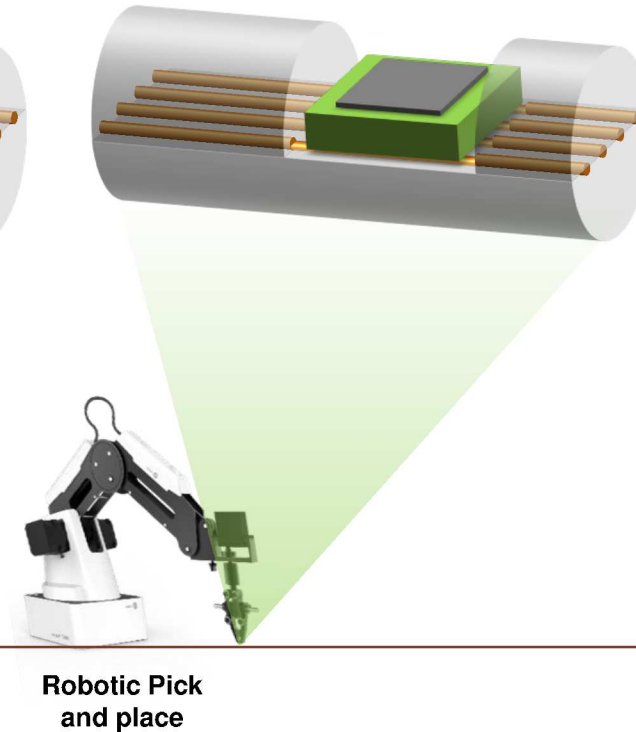
STEP 2:

Cladding locally removed to expose wires



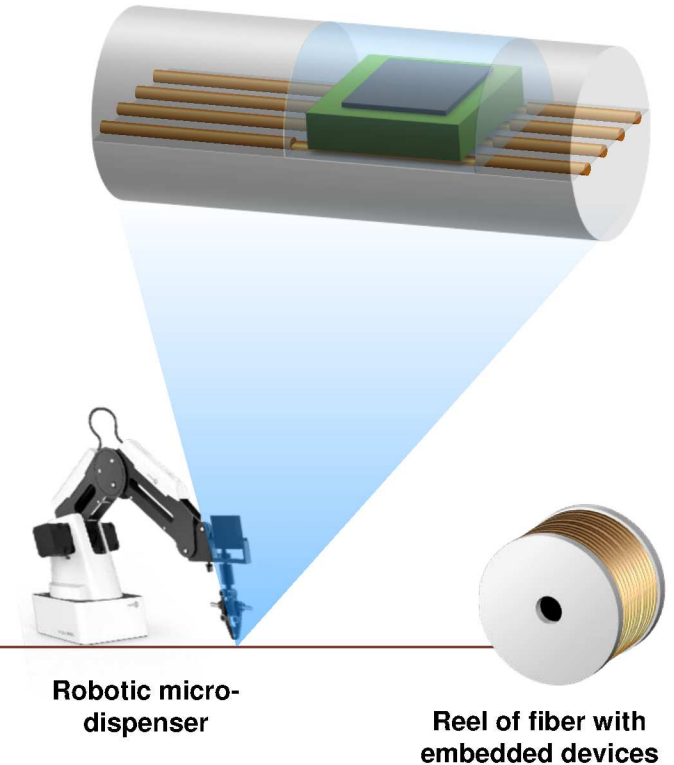
STEP 3:

Placement of chips with bottom solder bumps



STEP 4:

Coating applied and cured

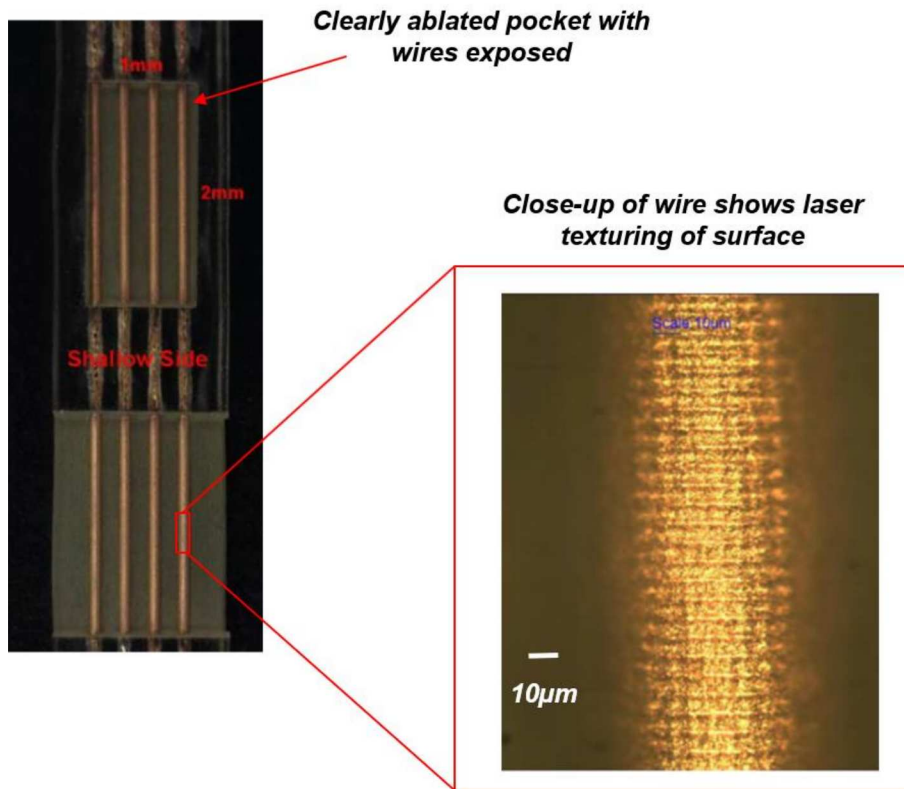




Exposing Copper Wires for Electronics Attachment

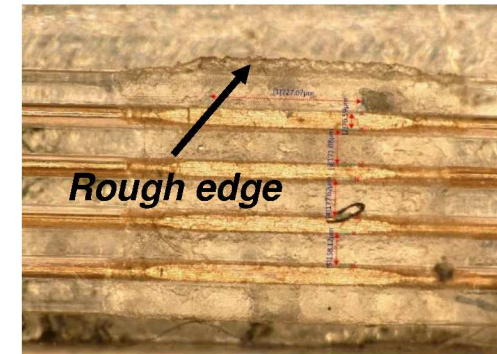


Laser Ablation

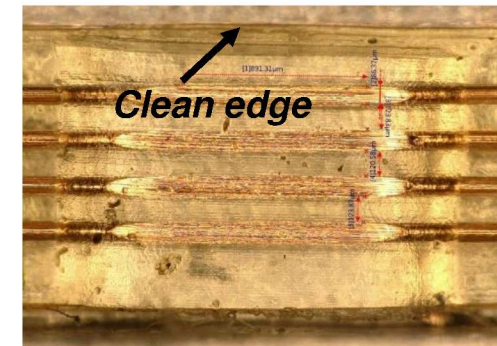


CNC Milling

Polycarbonate



Ultem

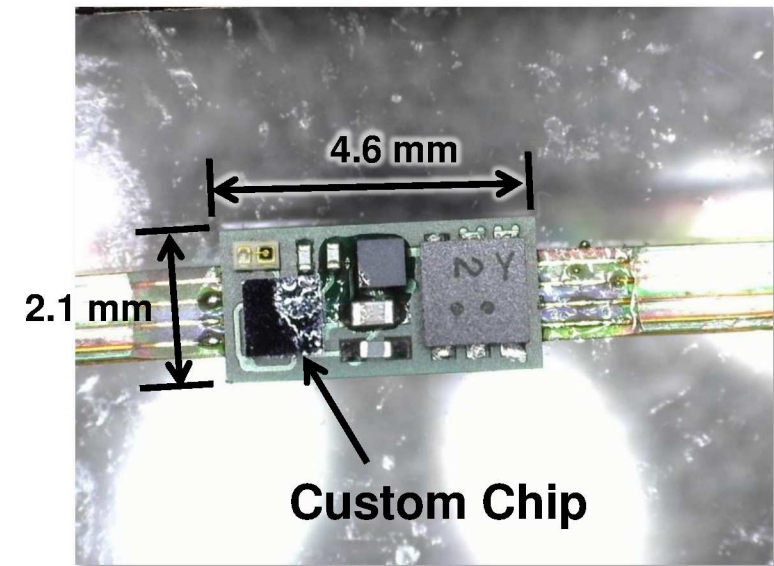
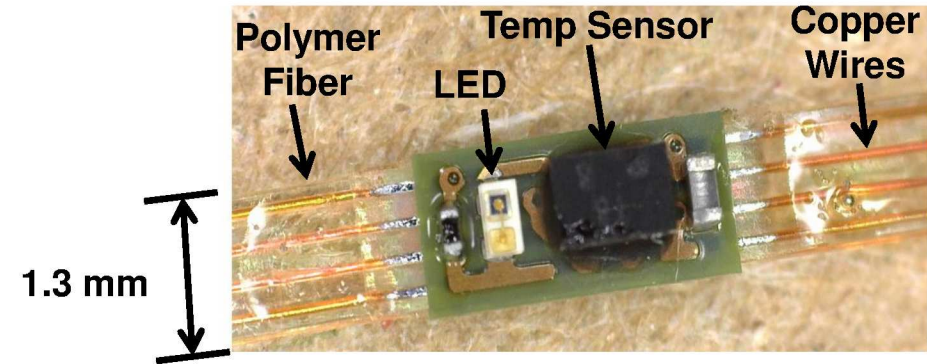
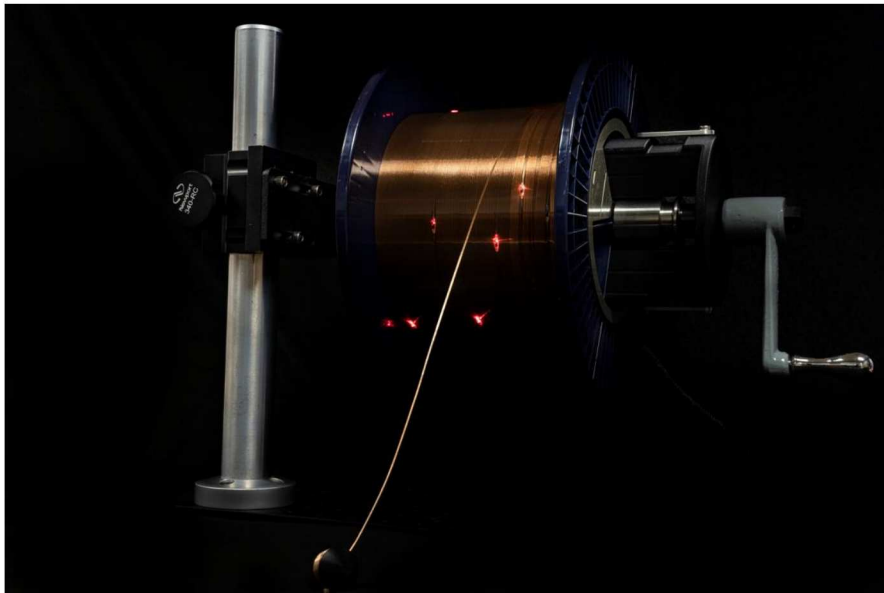




Interfacing Electronics to the Copper Bus



- Electronics are interfaced to the four-wire bus using an interposer PCB (green)
- The interposer can support a sensing element, processor, and memory
- The resulting fiber can then be integrated into a textile





Integration of Interposer into Fiber





Fiber Encapsulation

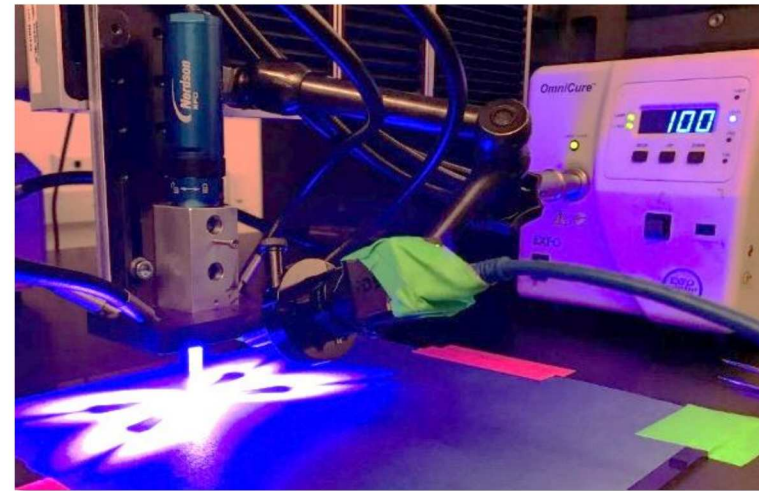


- Electronics can be encapsulated for protection from water
- Encapsulation can be performed with a variety of methods and materials
- Overcoating of drawn fiber is also offered as a GFC

UV Curable Epoxy



Inline Polymer Curing

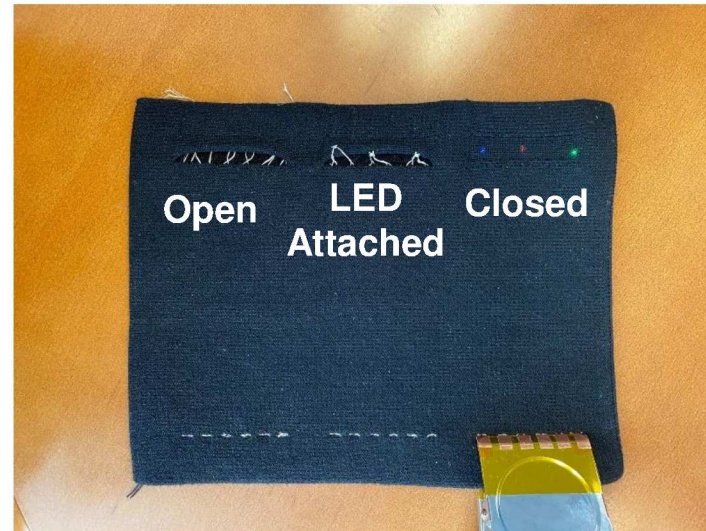




Integration of Fibers into Knit Channels



- Knit channels can be used to enclose hardware
- Conductive yarn can attach to electronics for connectivity to battery or outside of fabric



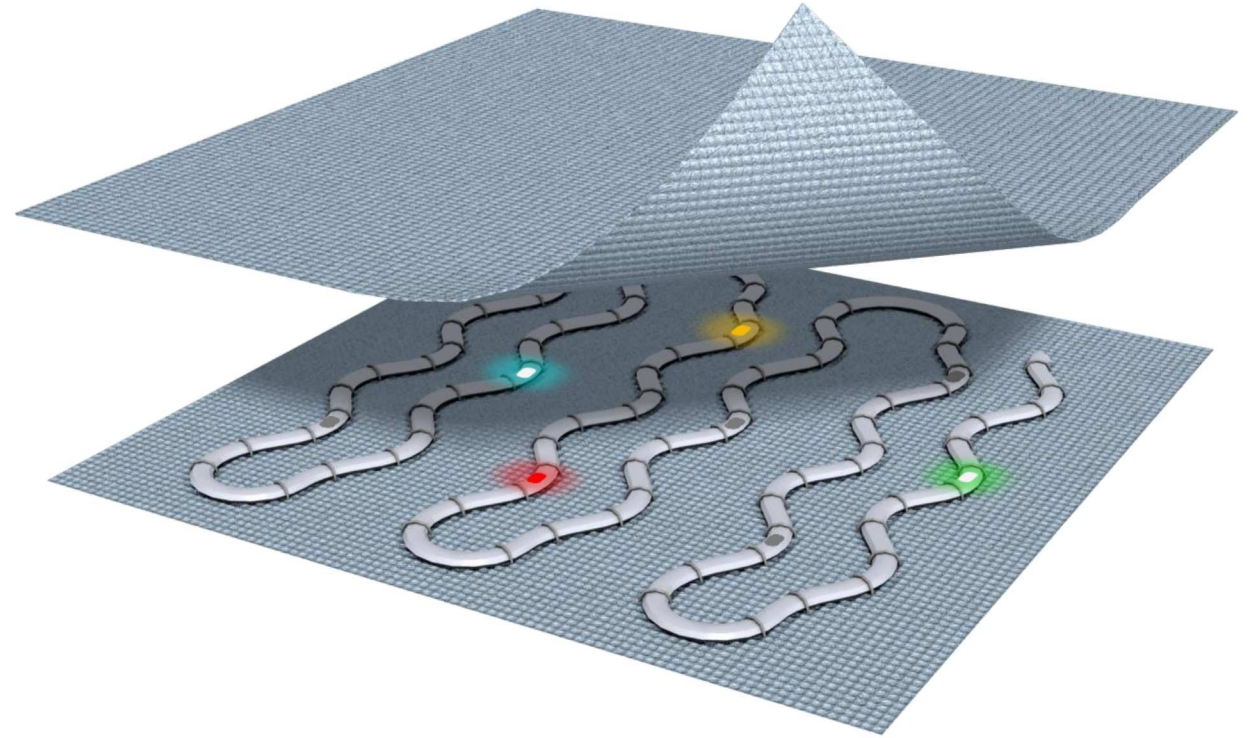
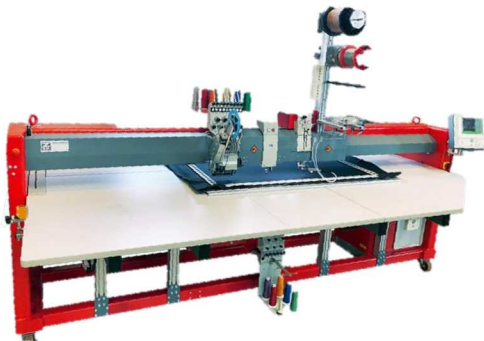


Embroidery of Fibers



- Embroidery can be used to integrate polymer fibers into the textile
- We are currently testing with various polymer types and diameter

Custom Embroidery Process

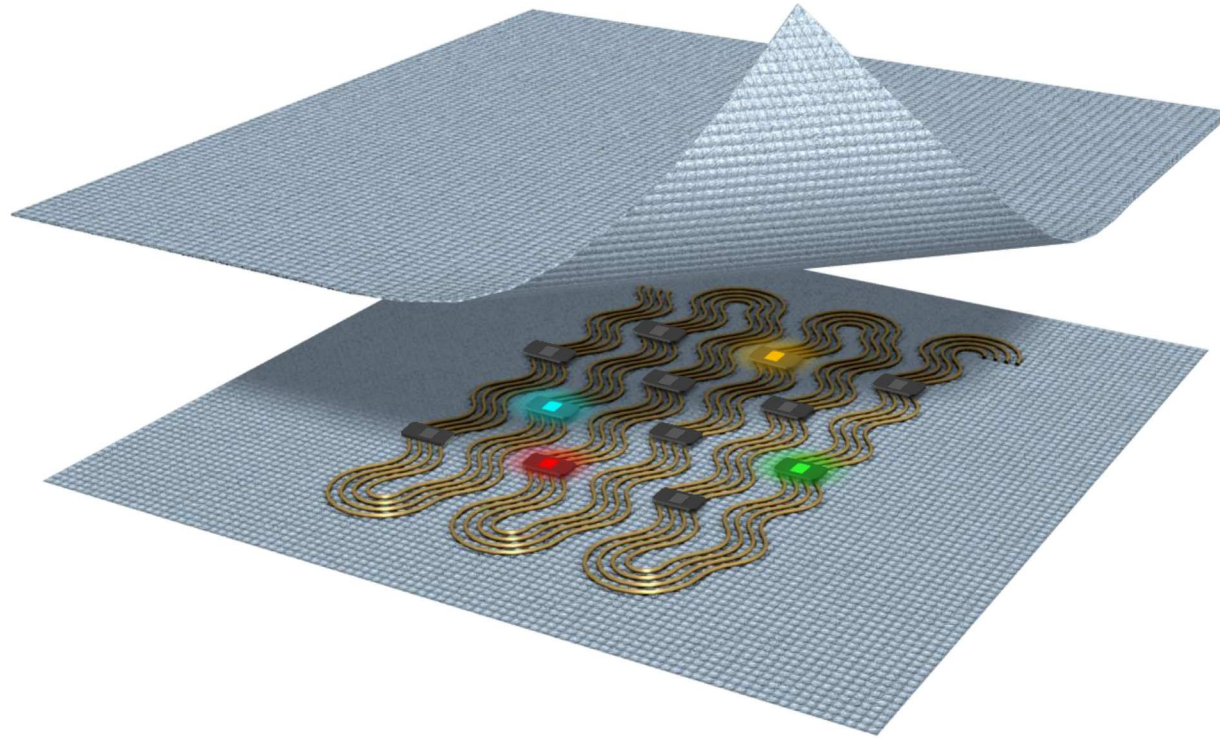




Direct Attachment to the Fabric



- **Electronics can be attached directly to traces in the fabric**





Conductive Traces on Fabric



- Several methods are available for applying conductive materials to the fabric to acts as an electrical bus

Embroidery



Sew wire & conductive yarns directly onto fabric

Knit



Conductive Yarns Knit

Laser Cut



Etch conductive fabric composite & peel away negative

Screen Print



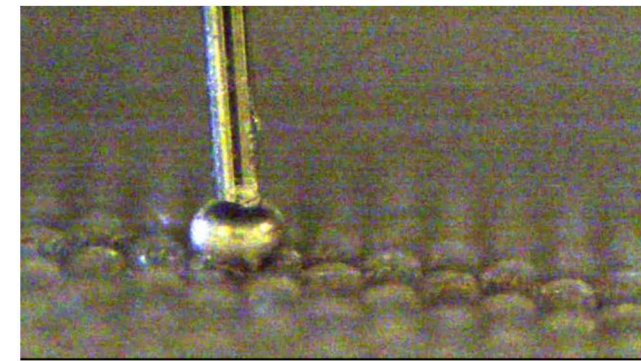
Conductive silver ink printed on laminate layer

Evaporated Metal



Aluminum

3D Printed Metal



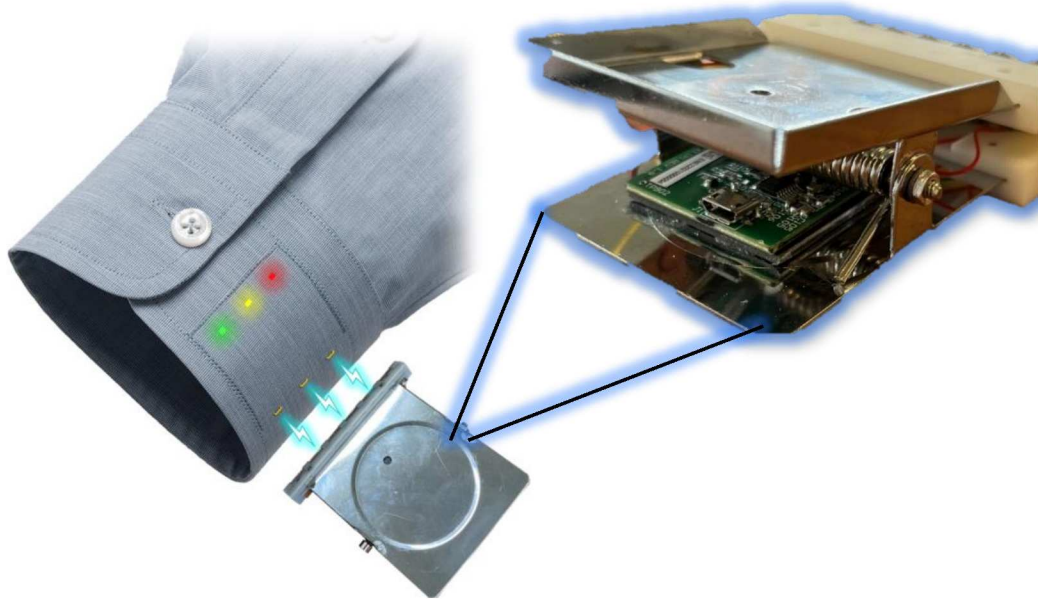
Silver Ink



Data Retrieval and Battery Recharge Method



- **Conductive yarns are used to interconnect the electronics**
- **A clip is used to make electrical contact to the fabric in order to retrieve data**



Conductive Yarn
Soldered to Flex



LED

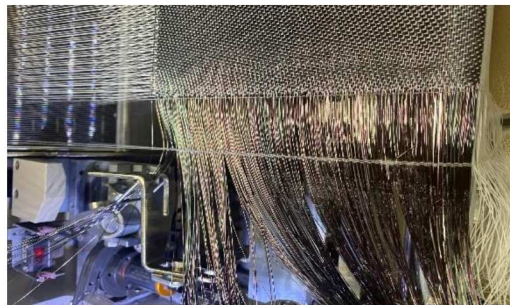
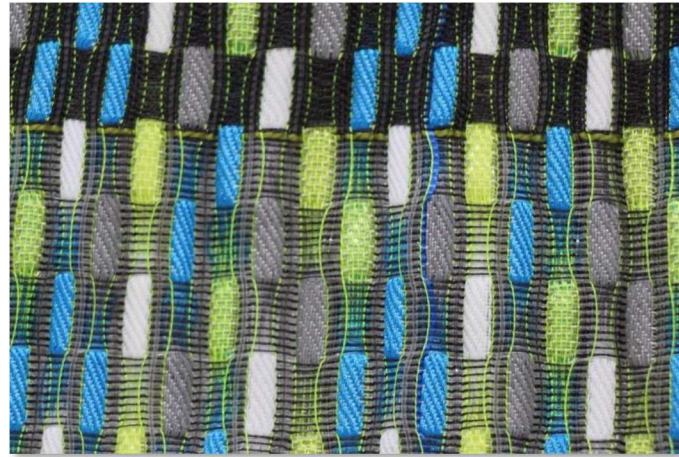
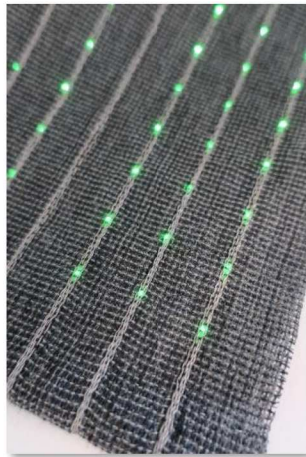


Conductive
Stitching





A variety of textile construction capabilities are available, including full garment construction

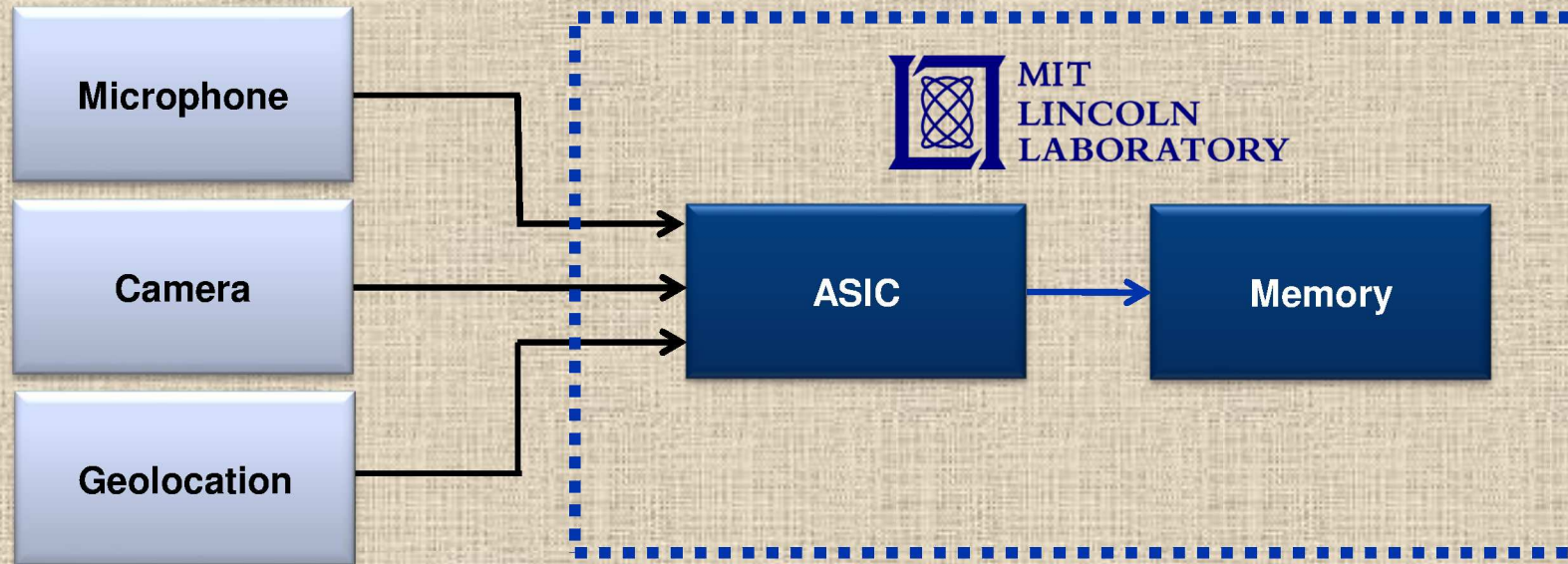




Back-end Electronics

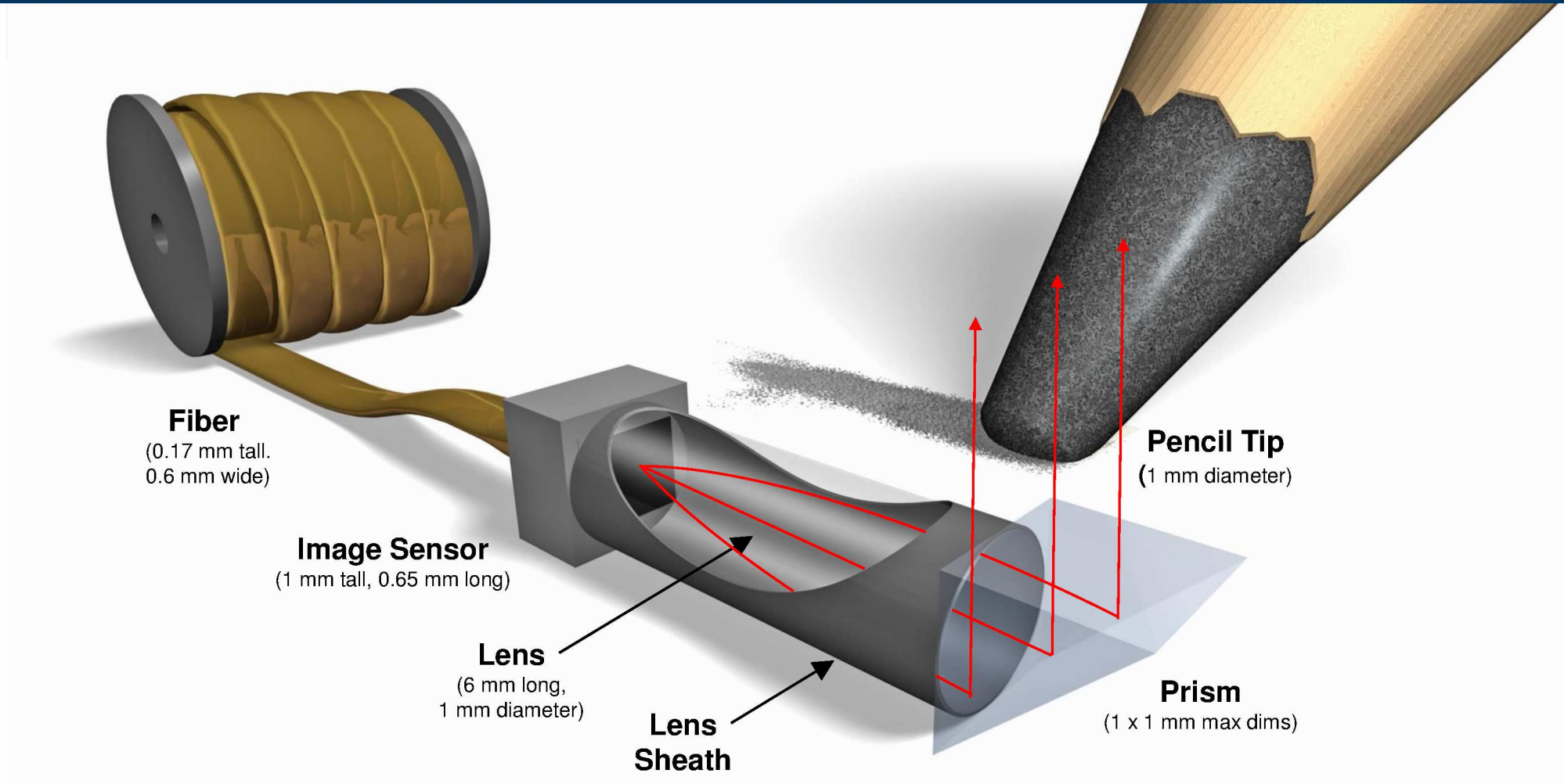


- The electronics in the baseline designs can be integrated into a custom ASIC
- Performers who would like this capability will work with MITLL to establish a protocol for their interface





Custom Optics

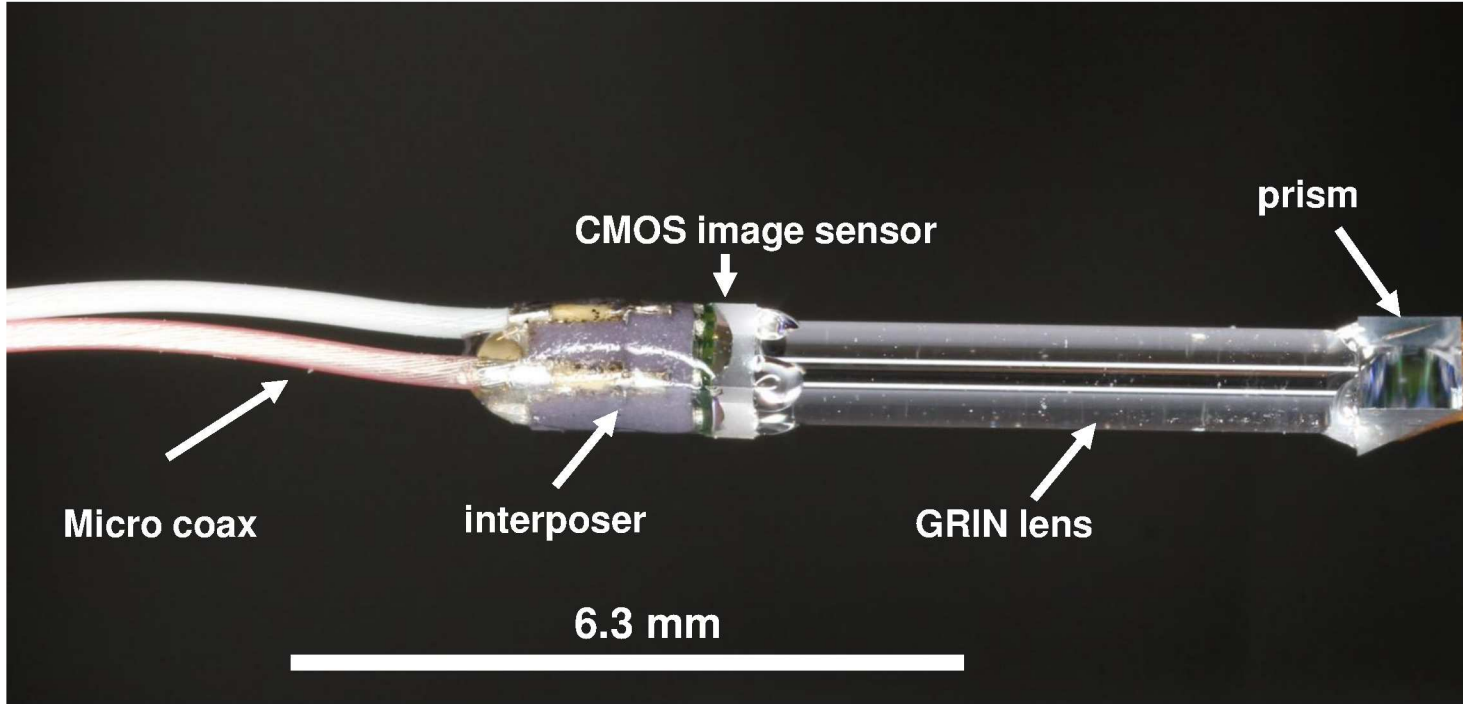




Custom Optics



- Custom optics have been integrated into a garment and tested
- The geometry of the optics can be adjusted to fit the needs of the performer





Summary






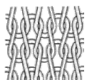


- **Government Furnished Capabilities are being offered in a variety of areas:**
 - **Integration of electronics into fibers**
 - **Integration of fibers and/or electronic components into fabrics**
 - **Conductive yarns for interfacing with battery and/or data retrieval**
 - **Textile engineering and full garment construction**
 - **Back-end electronics, including custom integrated circuit**
 - **Optics design for integration with camera**



Backup Slides




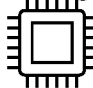



Capability Matrix to Reference for GFC Requests

#	Process	Highest TRL*	Capability Description	Tour Stop
1	Filament Draw 	7	Thermally drawn polymer fibers containing wire buses	1
2	Yarn twisting 	5	Direct twist to ply custom yarns and fibers, includes core wrapping	4
3	Weaving 	6	Functional fiber & conductive yarn weaving, channel weaving, multi-layered fabric weaving	4
4	Knitting 	5	Stoll ADF Knit & Wear™ technology seamless weft knitting double bed 14gg/7.2 industrial machine. Shima Seiki Wholegarment™ technology seamless weft knitting double bed 10gg industrial accessory machine. Brother™ double handloom 7gg manual knitting machine.	5
5	Print 	5	Printing of various inks on fabrics	6
6	Embroidery 	4	Conductive thread through-hole board attachment; conductive thread bus laydown for subsequent component attach	3

** Specifics of components to be integrated may render a process step more or less risky.*



Capability Matrix, continued

#	Integration Techniques	Highest TRL*	Capability Description	Tour Stop
7	Component Attach 	6	Soldering, conductive adhesive, or embroidered attachment of components onto copper bus in polymer fiber	2
8	Packaging 	8	Range of packaging capabilities available	2
9	Cut & Sew 	6	Cut & sew expertise with necessary equipment (Juki, serger, embroidery machine etc.)	7
10	Encapsulation 	6	Epoxy-based, UV-curable encapsulation for water resistance	2
11	Sensor Interfaces 	6	<ul style="list-style-type: none">• “Listen”: Analog output (30 dB gain); digital output (I2C or I2S)• “Look”: Digital output (MIPI CSI-2 or DVP); other protocols or analog output developed on prior U.S. Government programs open for discussion• “Locate”: I2C for generic sensors (e.g. IMU); other protocols or analog output developed on prior U.S. Government programs open for discussion	N/A

**Specifics of components or process to be integrated may render a capability more or less risky.*



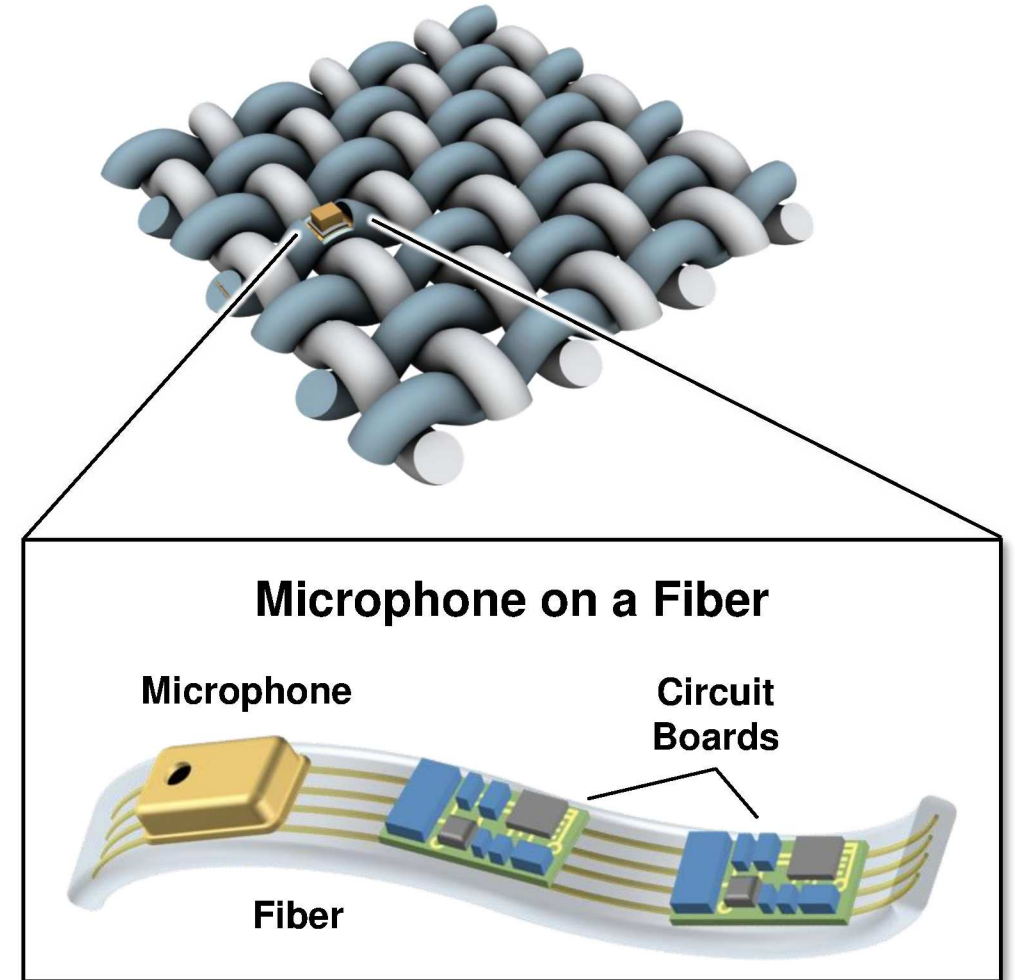
Integrating Polymer Fibers into Textiles



- **Fibers with electronic nodes can be integrated into textiles**
- **The fiber must remain flexible enough to crimp and bend during fabrication like traditional yarns**



Sub-mm fibers result in a more flexible fabric

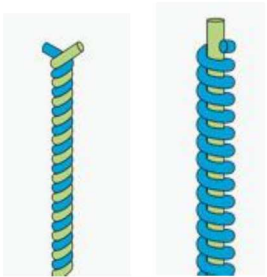




Fabric Capabilities



Yarn Processing



Direct Twist Machine

Weaving Looms



Industrial Loom



Table Loom

Knitting Machines



Shima Seiki
Knitting Machine



@ AFFOA - Stoll ADF
Knitting Machine

Sewing Machines



Industrial Sewing Machine



Heavy Duty Industrial Sewing
Machine (can handle thicker
fabrics)



Team Infrastructure for e-Textile Integration



Industrial Sewing Machines



CCI Studio Industrial Loom



Shima Seiki Knitting Machine



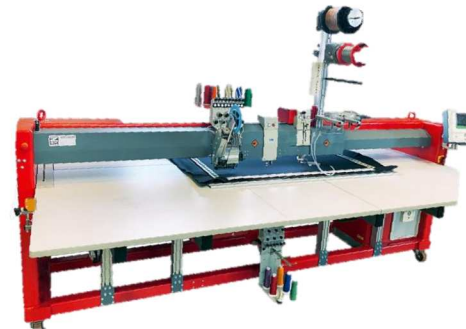
Stoll ADF Knitting Machine



Direct Twist Machine



AIT 2024C Tabletop Fabric Laminator



ZSK JVGA Technical Embroidery Machine (AFFOA)



Titanium:Sapphire Laser