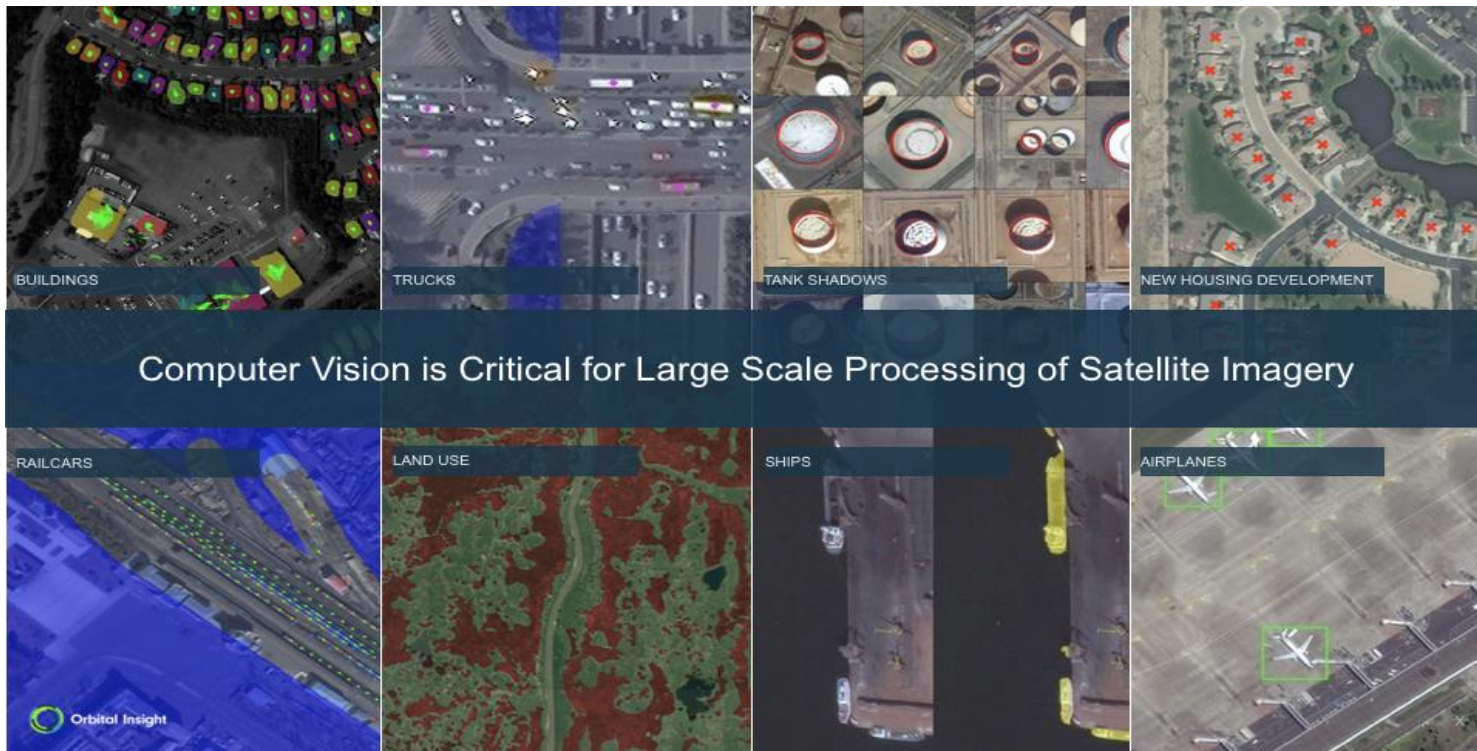


Who we are

Orbital Insight

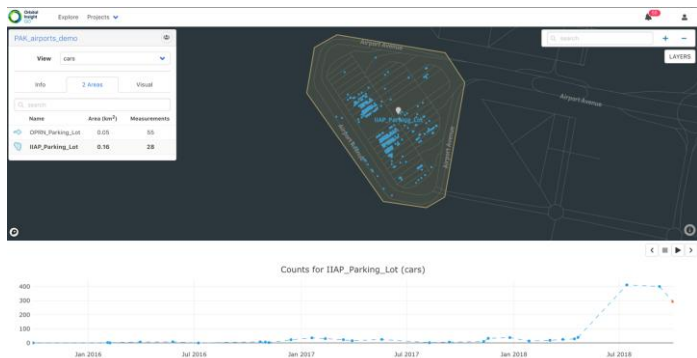
Lead Investigator:
Julius Simonelli

Current Team:
Julius Simonelli
CeCe Smith
David Robinson

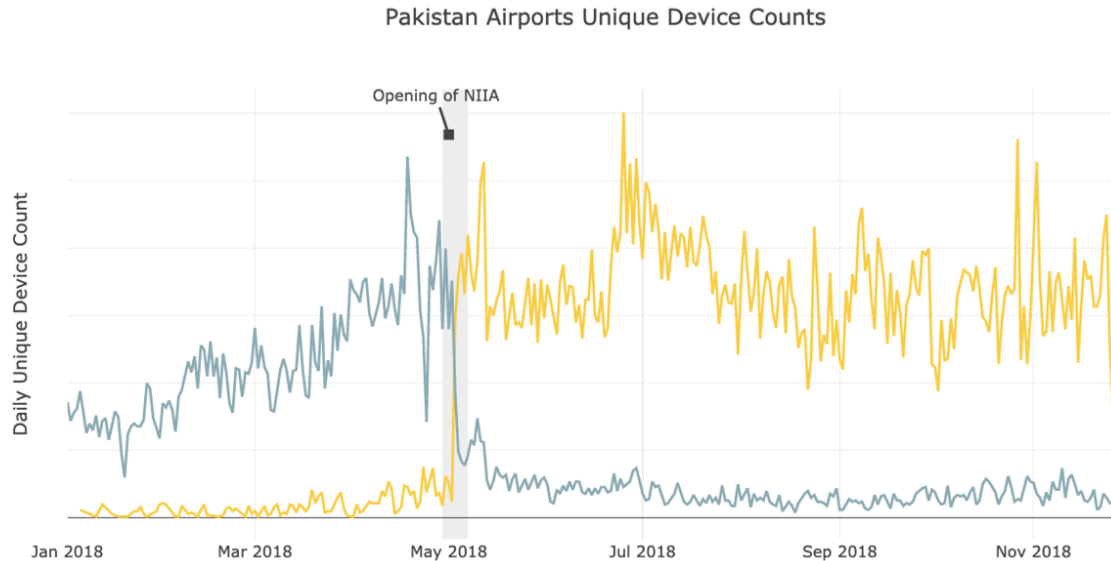


Research areas of interest

- Multi-source implementations of artificial intelligence, computer vision



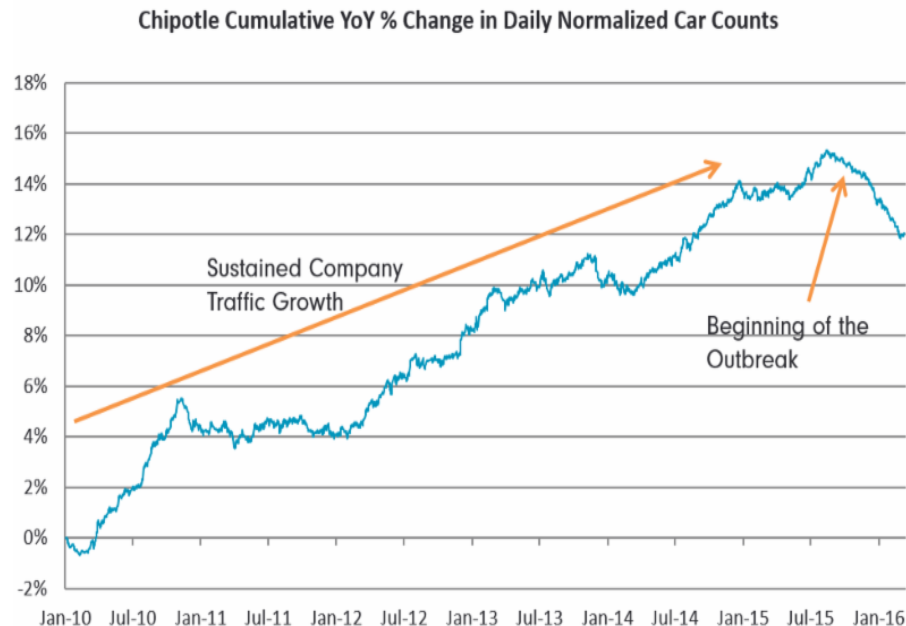
— NIIA
— BBIA



Unique capabilities

- Orbital Insight uses computer vision and data science to turn millions of images into a big-picture understanding of the world
- Industry leader in using computer vision to generate impactful analysis
- Counting billions of cars, oil storage tanks, planes, ships and other objects of interest across diverse geographies

E. Coli Outbreak



Looking for implementations

- We have expertise in using computer vision to answer critical questions in the commercial and public sectors
- Interest in engaging with other technical experts
 - Radiative transfer
 - System integration
 - Multi-spectral and hyperspectral data analysis
- Interest in partnering with organizations with public sector expertise
 - We are a commercial startup actively participating in Government R&D programs and seek collaboration with companies experienced in the public sector

Contact Information

- Julius Simonelli
 - Computer Vision Scientist
 - Orbital Insight
 - julius.simonelli@orbitalinsight.com
 - 540-358-5487
 - www.orbitalinsight.com
- CeCe Smith
 - Technical Communications
 - Orbital Insight
 - cece.smith@orbitalinsight.com